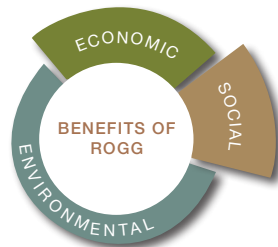
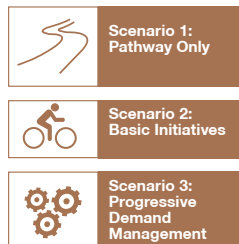


## BENEFITS OF THE RIVER OF GRASS GREENWAY (ROGG)



### Alternative Transportation Strategies



ROGG has the potential to provide opportunities for enhanced educational experiences to over 500,000 potential visitors and users and provide tremendous health and wellness, environmental, recreation benefits, as well as, additional revenues to the State of Florida and the South Florida region, all while providing for its own long-term future.

### Health and Wellness

Estimated Calories Burned and Pounds Lost Annually



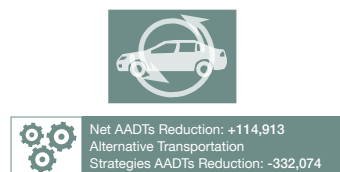
### Health Savings



\*Annual per capita health cost savings for 2014 - \$322 (U.S. Bureau of Labor Statistics Consumer Price Index)

### Annual Average Daily Vehicle Trips (AADTs)

Estimated Annual Average Daily Vehicle Trips (AADTs) Reduction



### Safety

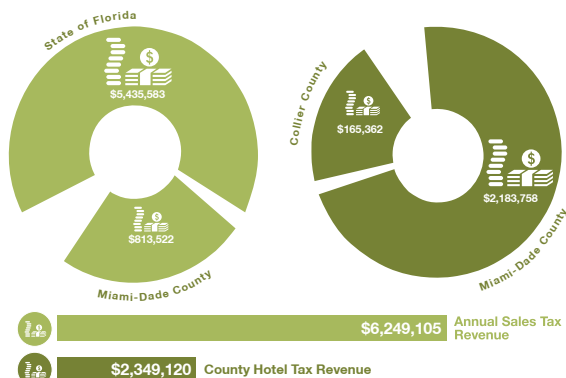


### Recreation



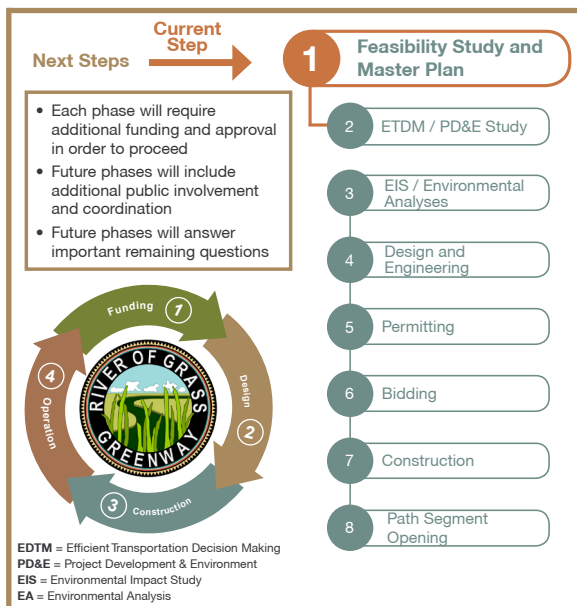
\*Annual per capita recreation cost savings on 2014 - \$10 (NCHRP Report 552)

### Potential Collier County and Miami-Dade County Hotel Tax Revenue



Assumptions/ Notes: State of Florida collects a 6% sales tax as of 2014 on non-grocery expenses.

### WHAT IS NEXT FOR ROGG



## RIVER of GRASS GREENWAY

FEASIBILITY STUDY and MASTER PLAN

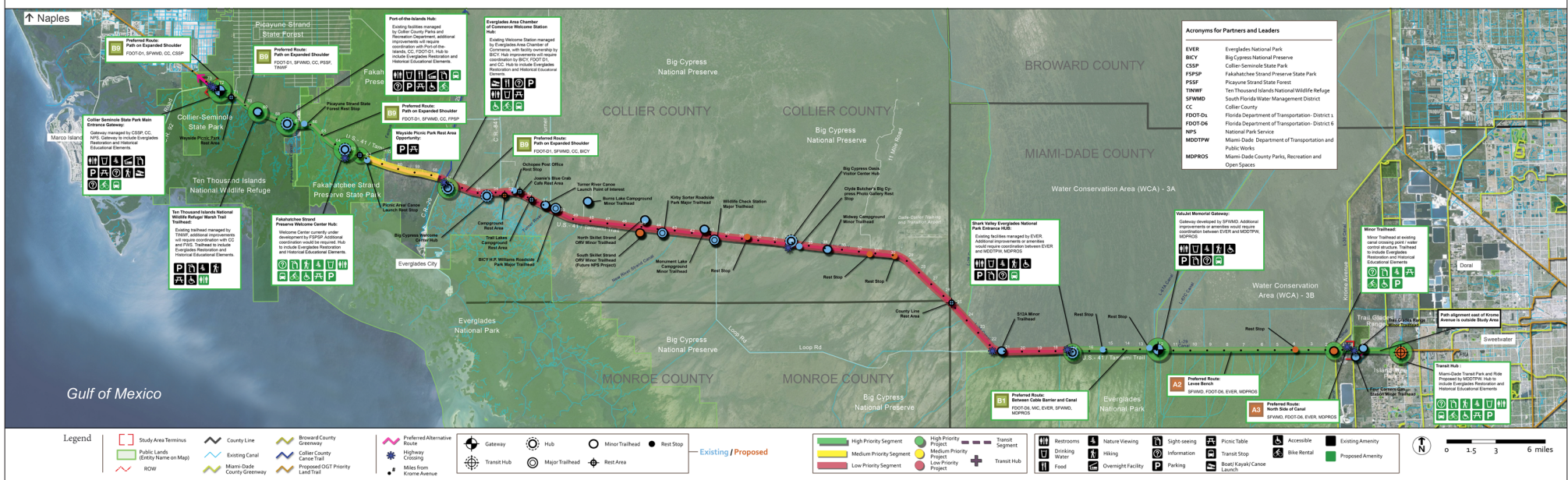
*Born out of a notion to provide public access to one of the most unique and well-studied landscapes in the world, the vision for the River of Grass Greenway (ROGG) is for a non-motorized transportation and recreation corridor across the Everglades, connecting Naples and Miami, that promotes enhanced opportunities for education and stewardship of the environmental and cultural assets of this unique area.*

*At a time for growing concerns about the environmental impacts of providing vehicle-only access to our national treasures, shared-use paths have proven to be effective means of reducing natural resource impacts and encouraging access to our natural areas.*



Friends of the River of Grass Greenway  
P.O. Box 5031  
Everglades City, FL 34139  
www.evergladesROGG.org

**AECOM**



### Path on Separate Boardwalk Facility Next to Bridge (ROGG West) *(within FDOT right-of-way)*



### Path Next to Existing Bridge / Separate Path Bridge Facility *(within FDOT right-of-way)*



### Path Between Cable Barrier and Canal (within FDOT right-of-way)